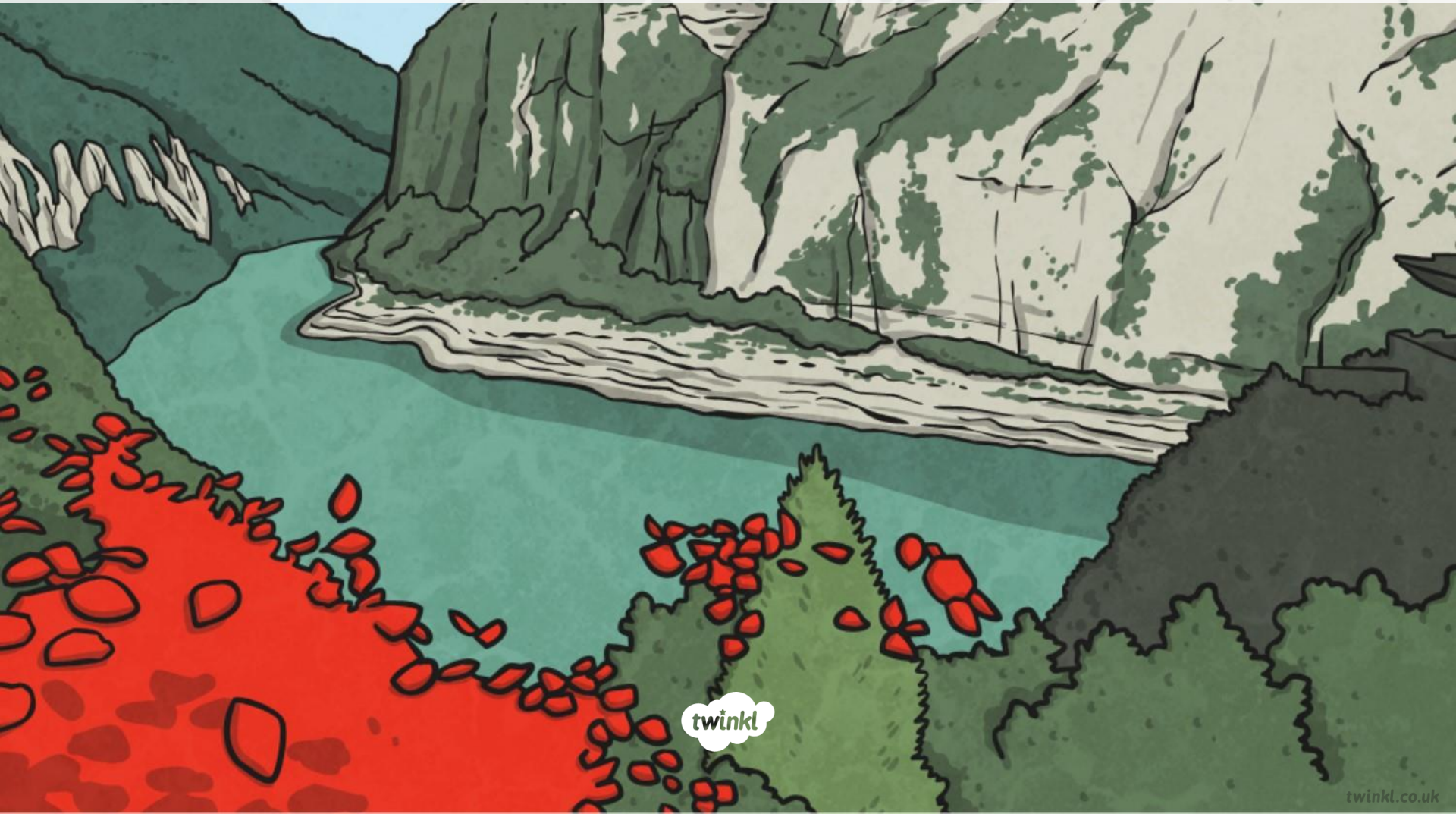


Modal Verbs



Modal verbs are auxiliary verbs which cannot usually work alone.
They are used with a main verb.

These are **modal verbs**:

might

will

should

may

would

can

could

must

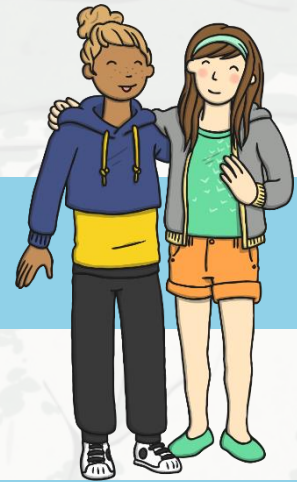
shall

ought to

Modal verbs make questions by inversion.

She **can** go out.

Can she go out?



We **could** drive there.

Could we drive there?



Children **should** eat fruit.

Should children eat fruit?



Modal verbs can be used to show how possible something is, or how likely it is to happen/have happened.

For example:

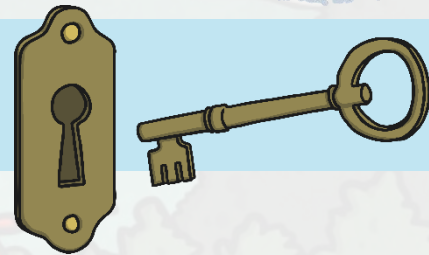
He's very late. He **could have missed** the train.



It's snowing so it **must be** very cold outside.

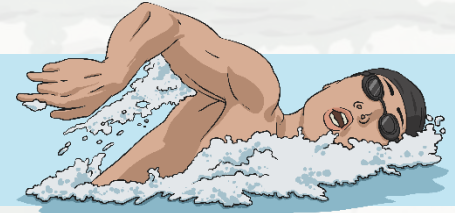


They **will lock** the windows when they go out.



Can you spot the **Modal verbs** used to show **possibility** in these sentences?

Mum **might** take us swimming after school.



You **could** eat a banana instead of those sweets.



“Hurry up! We **will** be late!” said Dad

Hurry up!

We **can** go the other way – it’s quicker.



You **ought** to go to bed earlier.



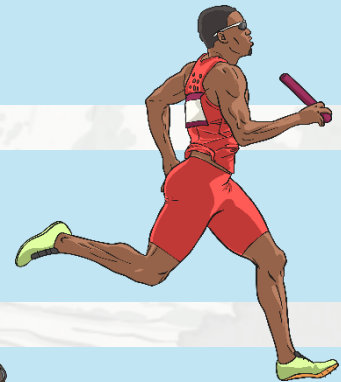
Which **Modal verbs** are missing from these sentences?

You **must** be hot in that thick coat.

If it's dry, **shall** we play outside?

He's so fast, he **should** win the race.

I'm fed up with my long hair. I **might** have it cut.



Did you choose these **modal verbs**?
Which others could you have used?

Modal verbs can also be used to show:

advice or obligation

Pupils **must** wear a uniform.

You **should** not smoke.



habits

I **will** often have cereal for my breakfast.

We **shall** always enjoy a walk in the park.



permission

May I leave a few minutes early?

Could we go to the post box on the way?

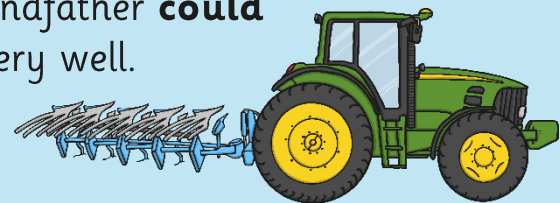
Please can we have an ice cream?

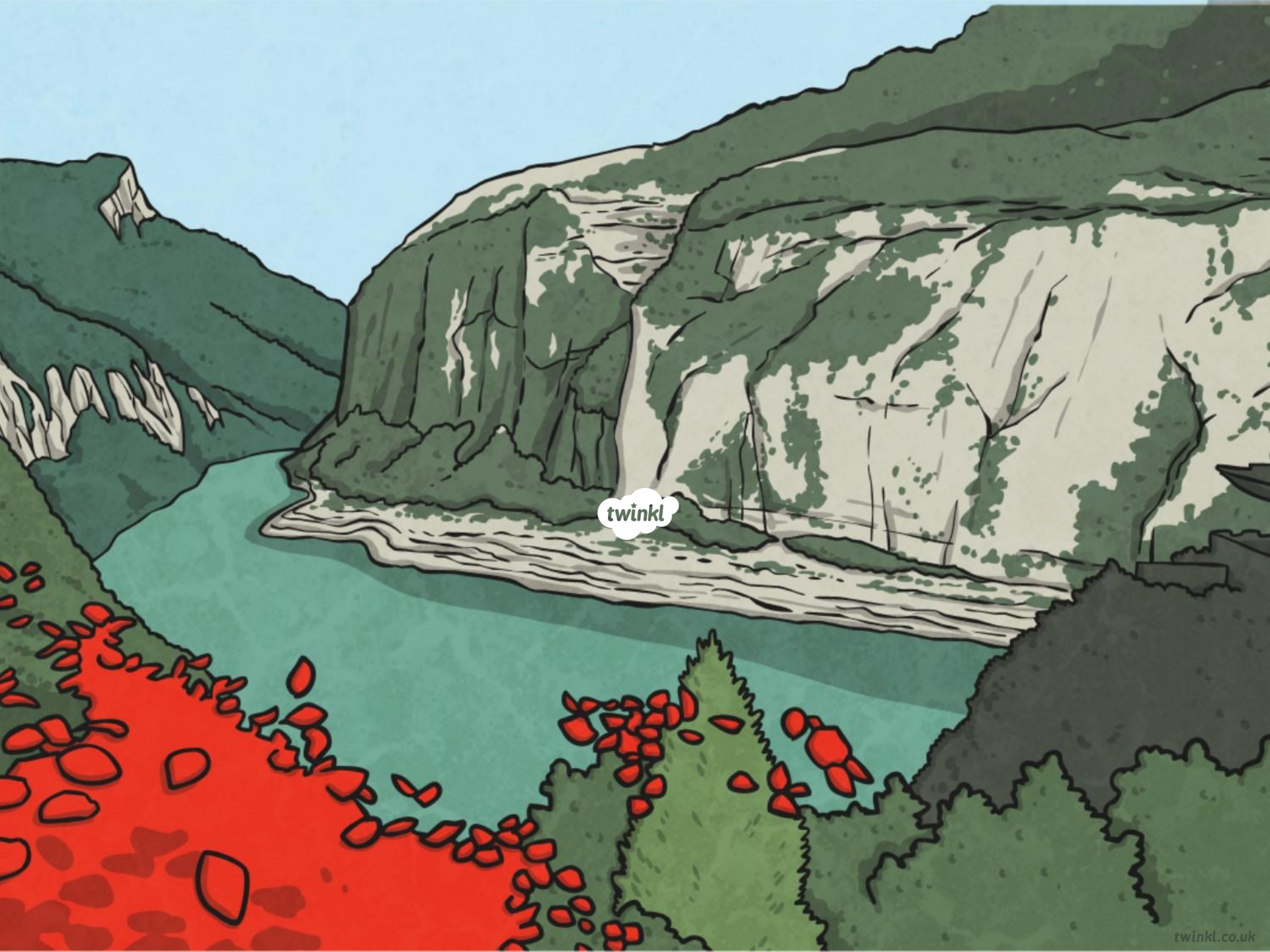


ability

I **can** drive a tractor.

My grandfather **could** draw very well.





twinkl